

# Goldmine Plantation

1,115.6 (+/-) Acres

Kershaw County, South Carolina

Priced at \$5,578,000 (\$5,000/acre)\*

\*Final price will be surveyed acres multiplied by \$5,000/acre.

## For Showings

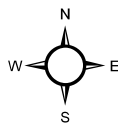
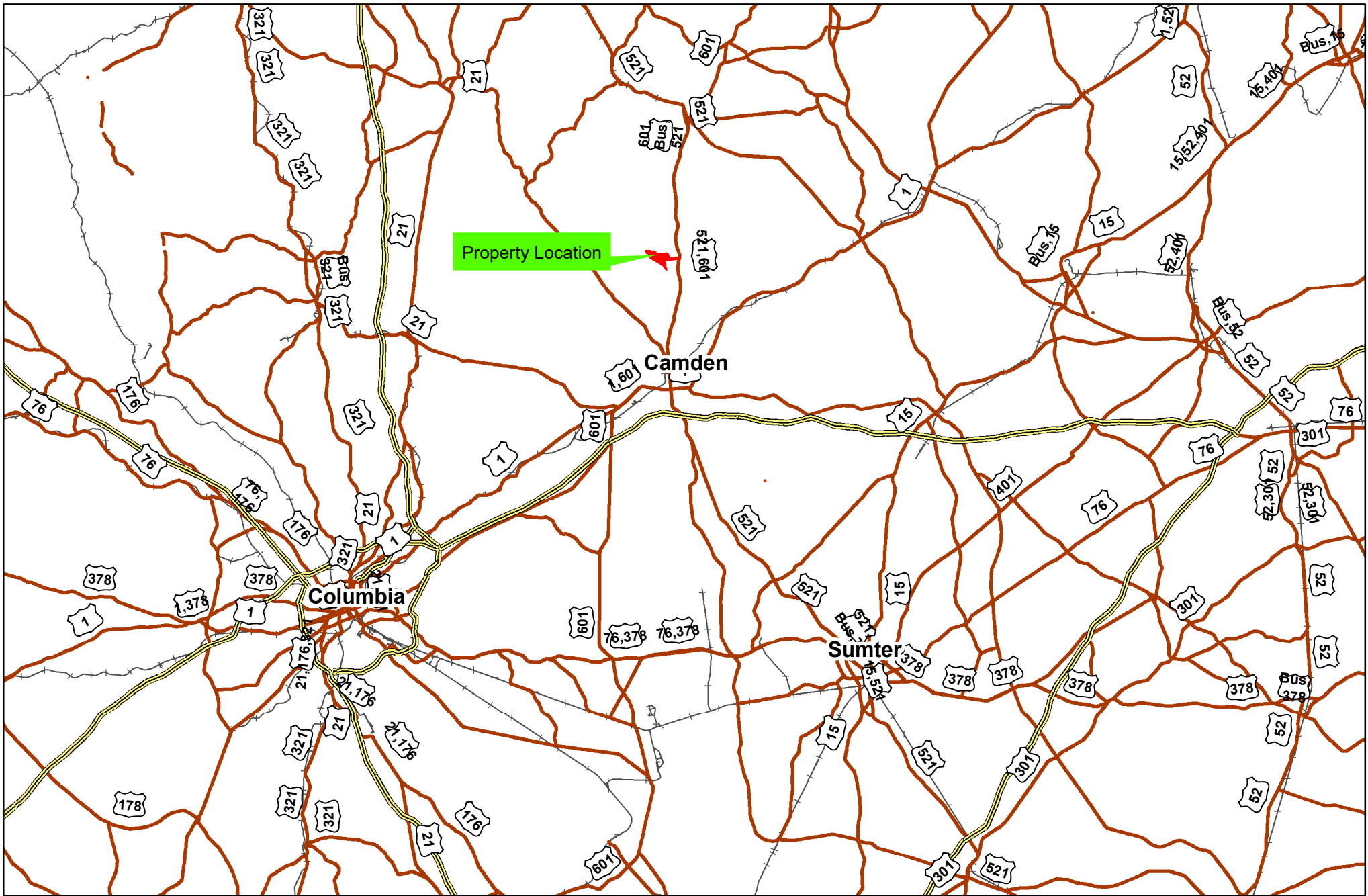
Bill Mixon	(803) 842-4602	<a href="mailto:bill@wisebatten.com">bill@wisebatten.com</a>
Mary Beth Poston	(803) 625-4256	<a href="mailto:marybeth@wisebatten.com">marybeth@wisebatten.com</a>

Additional Information may be seen at [www.wisebatten.com](http://www.wisebatten.com)

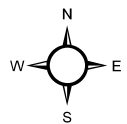
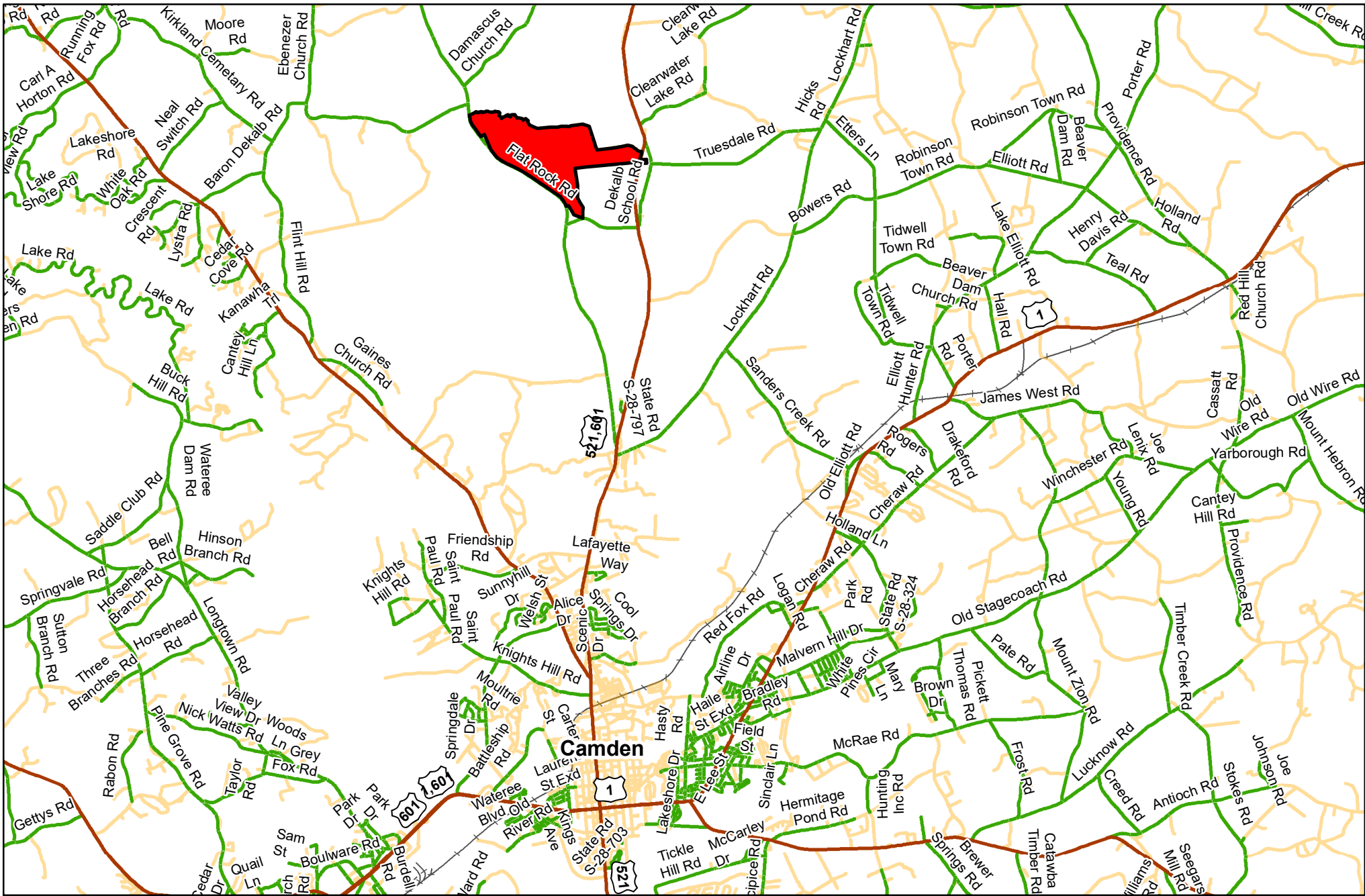
## Notes:

1. This property is jointly listed with Brown Land & Plantation Advisors.
2. This offering is subject to change or withdrawal without notice.
3. We welcome the participation of other brokers.



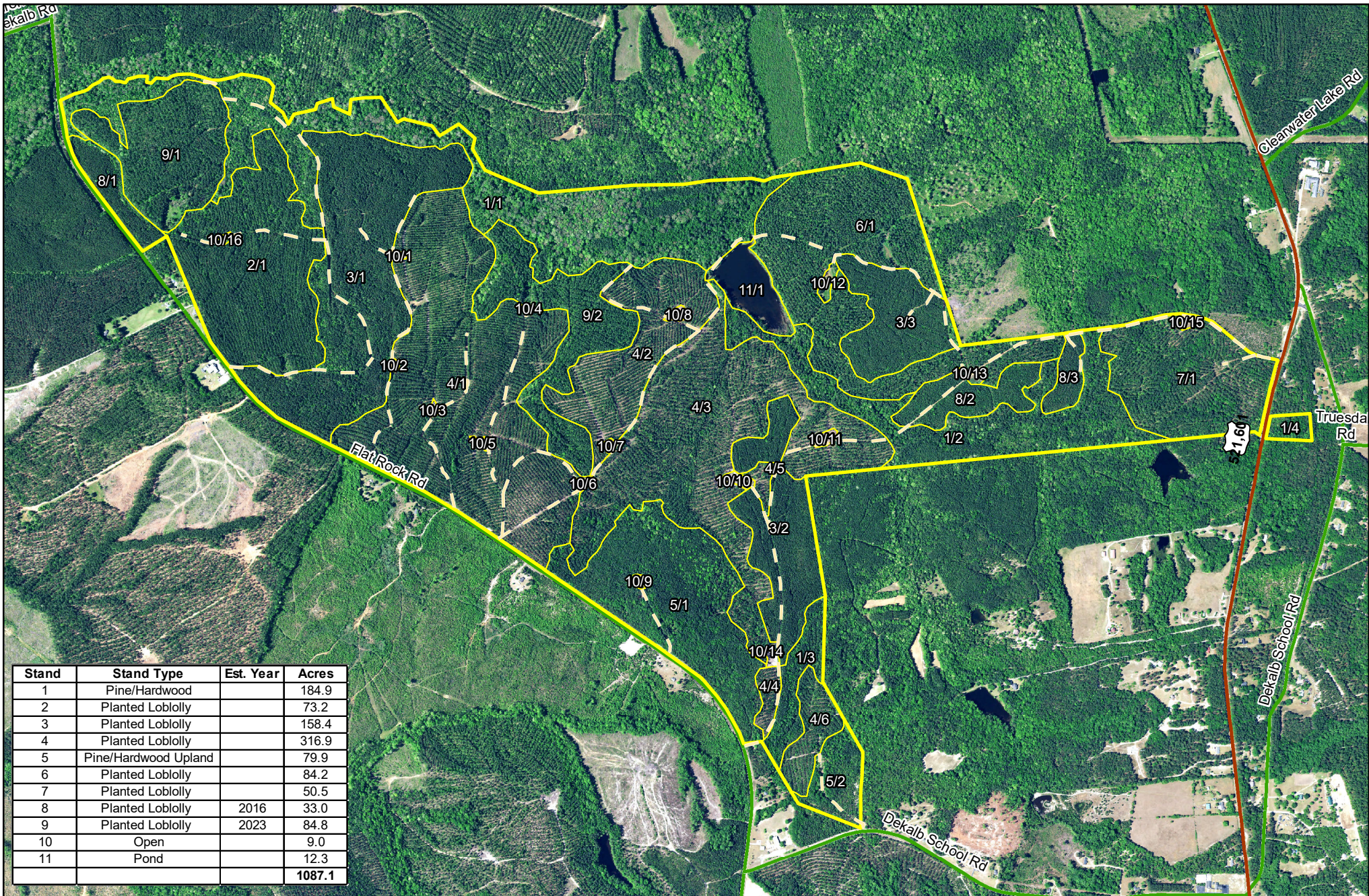


Location Map  
Goldmine Plantation  
1,115 +/- Tax Acres  
Kershaw County, SC  
Date: 6/26/2023

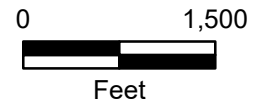
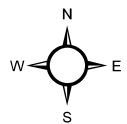


Location Map  
 Goldmine Plantation  
 1,115 +/- Tax Acres  
 Kershaw County, SC  
 Date: 6/26/2023





Stand	Stand Type	Est. Year	Acres
1	Pine/Hardwood		184.9
2	Planted Loblolly		73.2
3	Planted Loblolly		158.4
4	Planted Loblolly		316.9
5	Pine/Hardwood Upland		79.9
6	Planted Loblolly		84.2
7	Planted Loblolly		50.5
8	Planted Loblolly	2016	33.0
9	Planted Loblolly	2023	84.8
10	Open		9.0
11	Pond		12.3
			<b>1087.1</b>



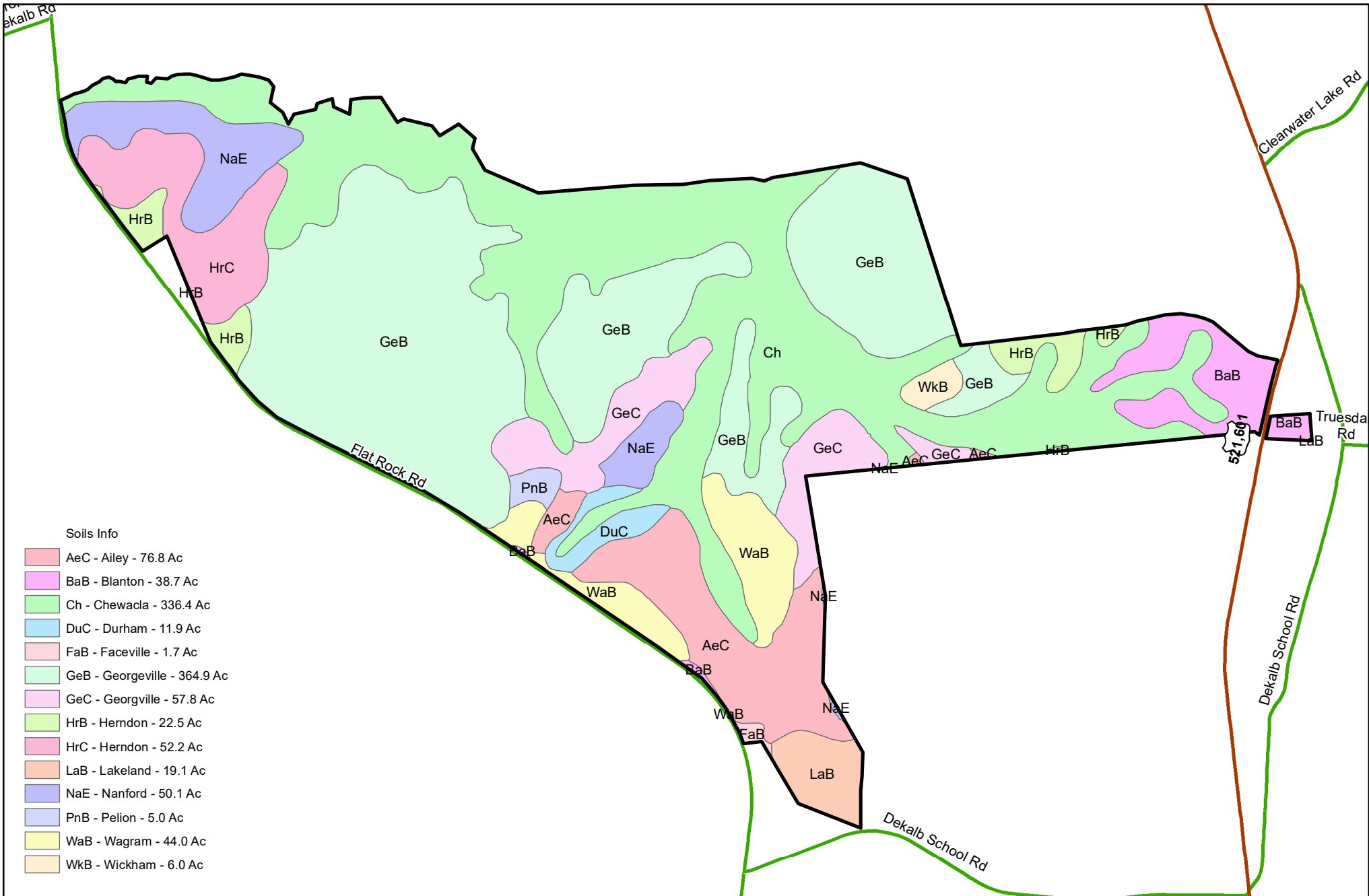
2021 Aerial Photography  
 Goldmine Plantation  
 1,115 +/- Tax Acres  
 1087.1 +/- GIS Acres  
 Kershaw County, SC  
 Date: 6/26/2023



**Goldmine Plantation**  
**Acreage Summary**  
**June 15, 2023**

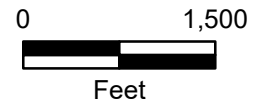
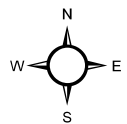
Stand	Sub Stand	Stand Type	Est. Year	Acres
1	1	Pine/Hardwood		111.8
1	2	Pine/Hardwood		57.3
1	3	Pine/Hardwood		12.5
1	4	Pine/Hardwood		3.3
2	1	Planted Loblolly		73.2
3	1	Planted Loblolly		92.2
3	2	Planted Loblolly		37.5
3	3	Planted Loblolly		28.7
4	1	Planted Loblolly		142.6
4	2	Planted Loblolly		43.3
4	3	Planted Loblolly		112.5
4	4	Planted Loblolly		3.9
4	5	Planted Loblolly		2.7
4	6	Planted Loblolly		11.9
5	1	Pine/Hardwood Upland		67.1
5	2	Pine/Hardwood Upland		12.8
6	1	Planted Loblolly		84.2
7	1	Planted Loblolly		50.5
8	1	Planted Loblolly	2016	10.6
8	2	Planted Loblolly	2016	16.2
8	3	Planted Loblolly	2016	6.2
9	1	Planted Loblolly	2023	42.6
9	2	Planted Loblolly	2023	42.2
10	1	Open		0.3
10	2	Open		0.3
10	3	Open		0.4
10	4	Open		0.2
10	5	Open		0.5
10	6	Open		0.4
10	7	Open		0.4
10	8	Open		0.7
10	9	Open		0.4
10	10	Open		1.1
10	11	Open		0.9
10	12	Open		1.3
10	13	Open		0.6
10	14	Open		0.6
10	15	Open		0.5
10	16	Open		0.4
11	1	Pond		12.3
				<b>1087.1</b>

Stand	Stand Type	Est. Year	Acres
1	Pine/Hardwood		184.9
2	Planted Loblolly		73.2
3	Planted Loblolly		158.4
4	Planted Loblolly		316.9
5	Pine/Hardwood Upland		79.9
6	Planted Loblolly		84.2
7	Planted Loblolly		50.5
8	Planted Loblolly	2016	33.0
9	Planted Loblolly	2023	84.8
10	Open		9.0
11	Pond		12.3
			<b>1087.1</b>



Soils Info

- AeC - Ailey - 76.8 Ac
- BaB - Blanton - 38.7 Ac
- Ch - Chewacla - 336.4 Ac
- DuC - Durham - 11.9 Ac
- FaB - Faceville - 1.7 Ac
- GeB - Georgeville - 364.9 Ac
- GeC - Georgville - 57.8 Ac
- HrB - Herndon - 22.5 Ac
- HrC - Herndon - 52.2 Ac
- LaB - Lakeland - 19.1 Ac
- NaE - Nanford - 50.1 Ac
- PnB - Pelion - 5.0 Ac
- WaB - Wagram - 44.0 Ac
- WkB - Wickham - 6.0 Ac



Soils Map  
Goldmine Plantation  
1,115 +/- Tax Acres  
Kershaw County, SC  
Date: 6/26/2023