

Furman Duck Ponds

97 (+/-) Acres

Hampton County, South Carolina

Priced at \$581,515.00 (\$5,995.00/acre)

For Showings

Bill Mixon	(803) 842-4602	bill@wisebatten.com
Mary Beth Poston	(803) 625-4256	marybeth@wisebatten.com

Additional Information may be seen at www.wisebatten.com

Notes:

1. This property is jointly listed with Brown Land & Plantation Advisors.
2. This offering is subject to change or withdrawal without notice.
3. We welcome the participation of other brokers.

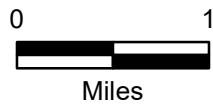
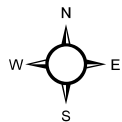
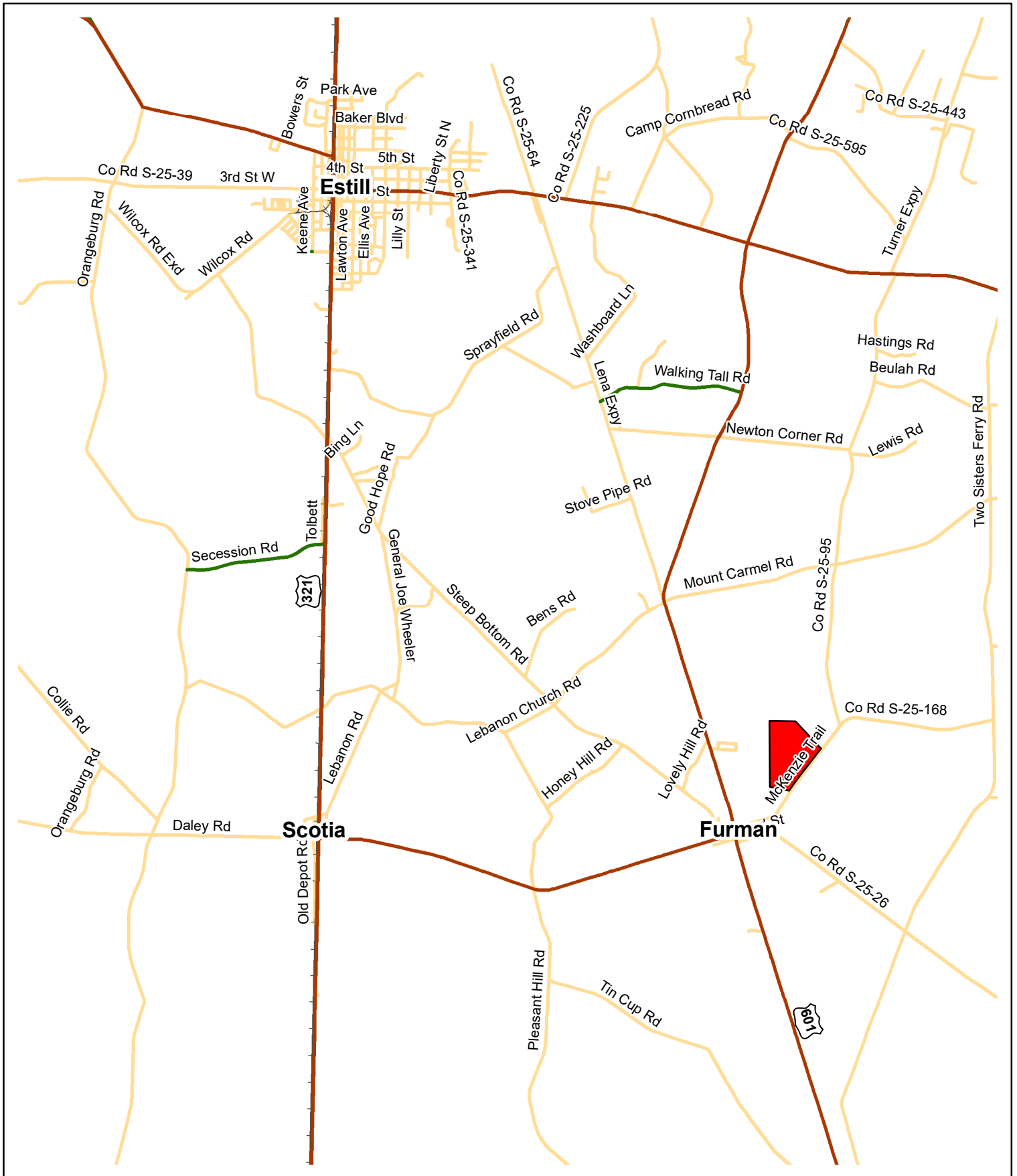


Furman Duck Ponds Narrative

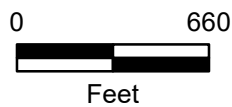
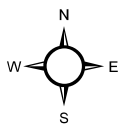
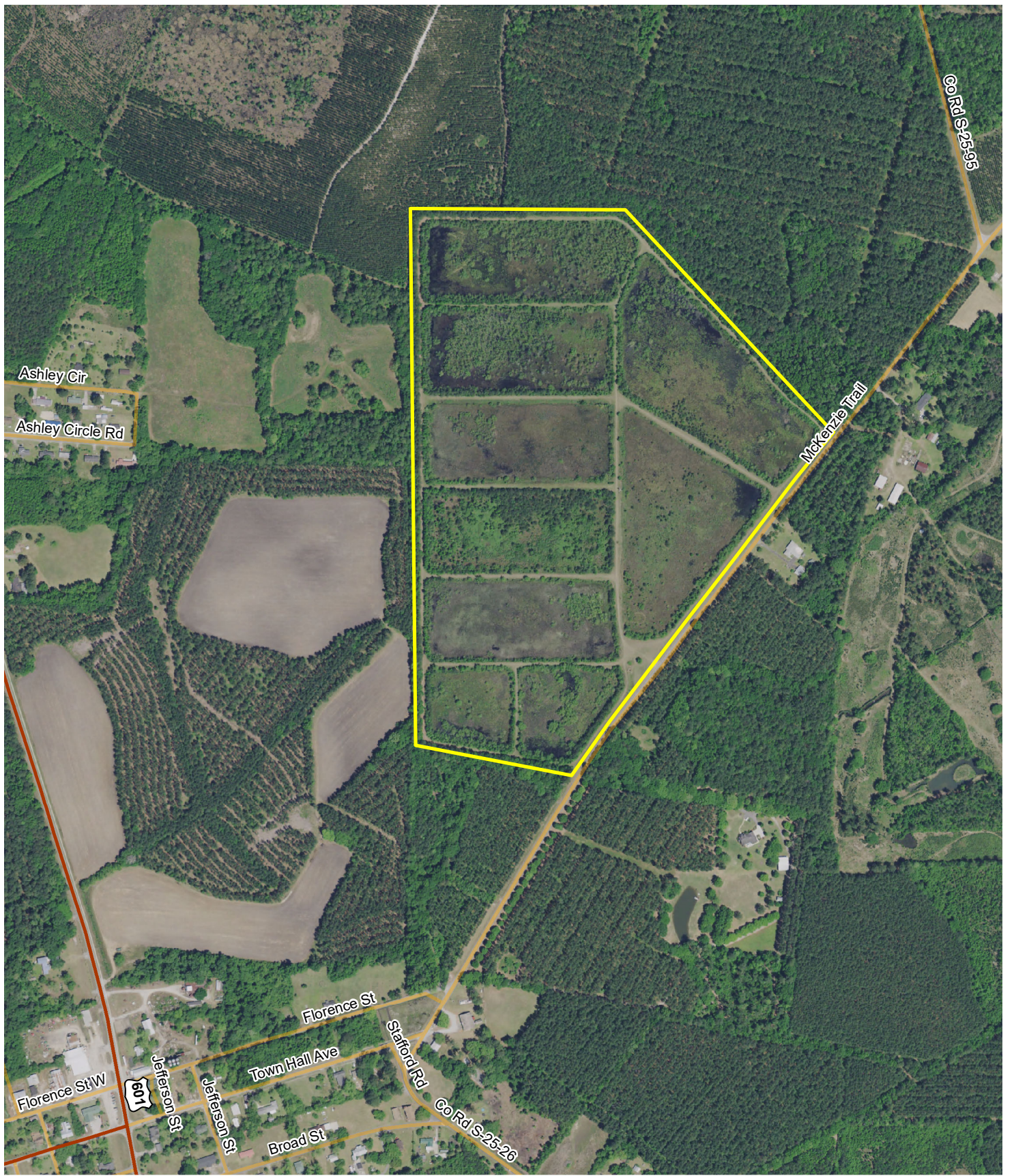
Nine individual impoundments formerly used for commercial catfish production. Excellent for duck hunting. Deep well with three phase electrical power. Ponds work equally well for fish and ducks.

The adjacent 586 acres are protected with a conservation easement and can never be developed.

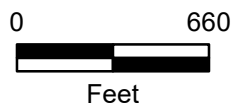
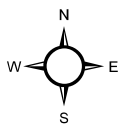
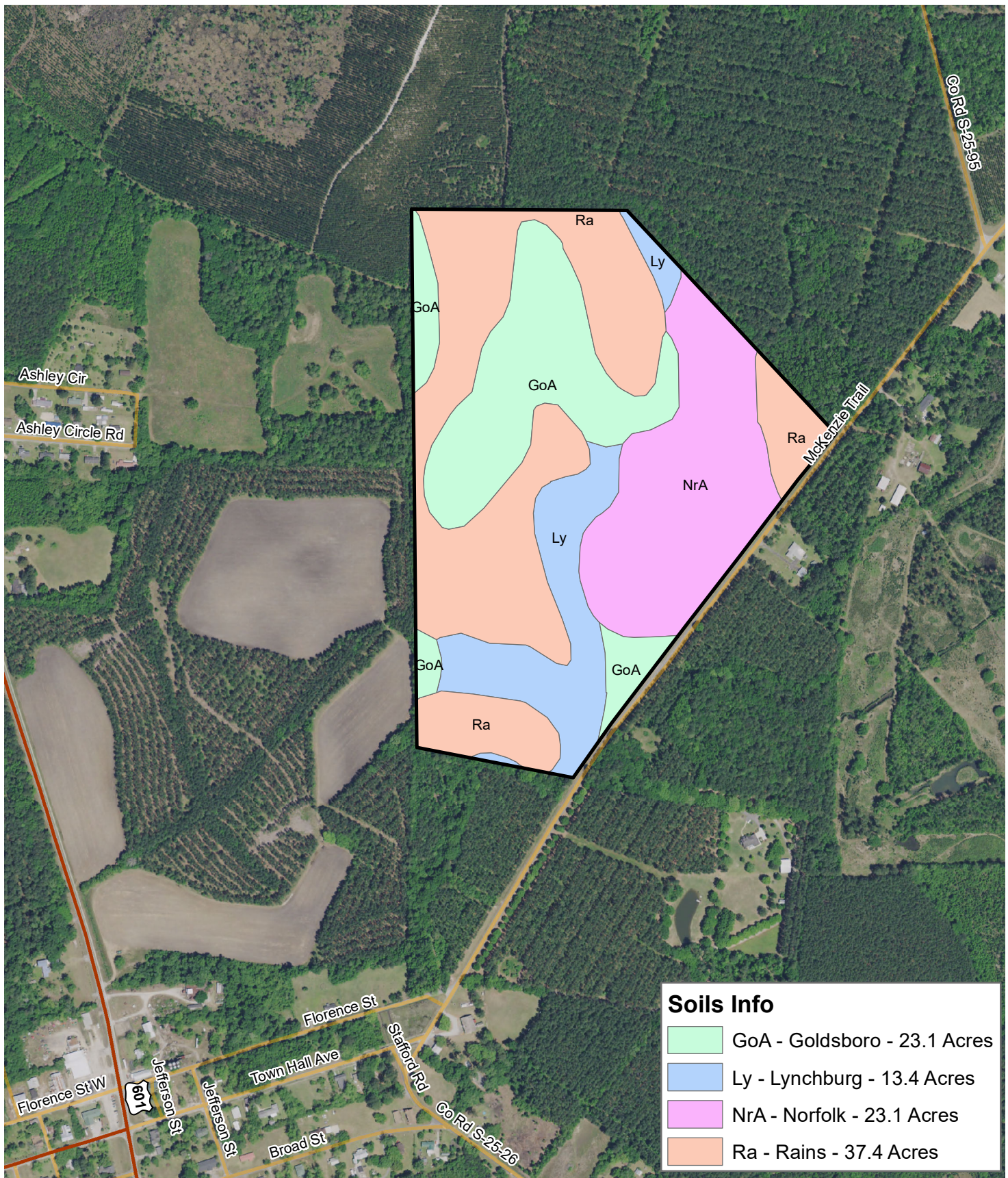
The soils are those that were present before construction of the catfish ponds.



Location Map
 Furman Duck Ponds
 97.0 +/- Plat Acres
 Hampton County, SC
 Date: 6/29/2023



2021 Aerial Photography
Furman Duck Ponds
97.0 +/- Plat Acres
Hampton County, SC
Date: 6/29/2023



Soils Map
 Furman Duck Ponds
 97.0 +/- Plat Acres
 Hampton County, SC
 Date: 6/29/2023
 2021 Aerial Photography