

Real Estate
Sales & Acquisitions

Wise H. Batten, Sr. (803) 625-4256
Mary Beth Poston (803) 625-4256
Bill Mixon (803) 842-4602



Forest Management
Land & Timber Management

Wise H. Batten, Jr. (803) 842-9851
Sheldon Swofford (803) 842-7401
Grover Smith (843) 226-0255
Matt Craven (843) 635-1384

Garnett Tract

24.4 (+/-) Acres

Hampton County, South Carolina

Priced at \$366,000 (\$15,000/acre)*

*Seller to pay for new survey. Final price to be determined by surveyed acres multiplied by \$15,000 per acre.

For Showings

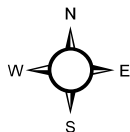
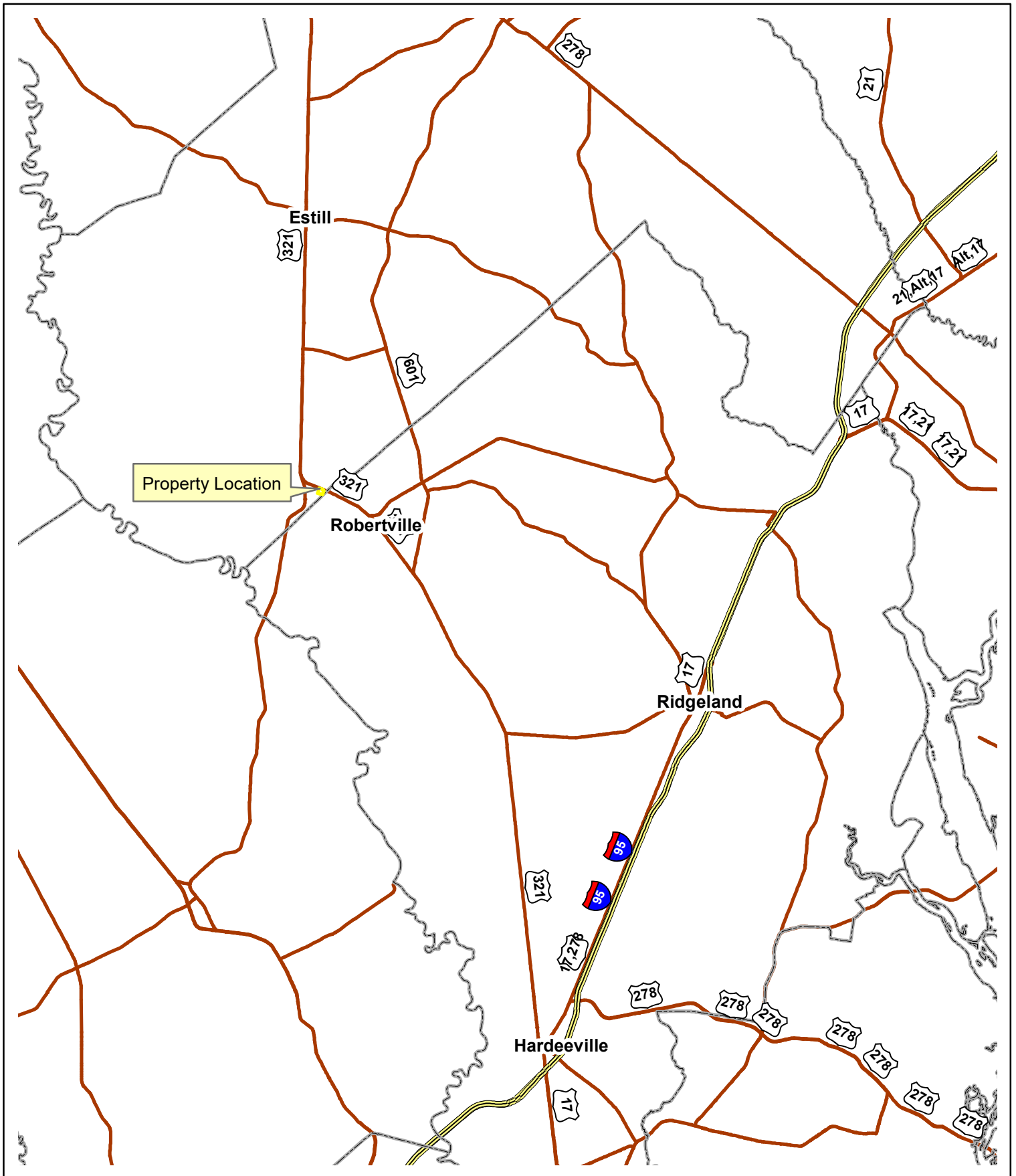
Bill Mixon (803) 842-4602 bill@wisebatten.com
Mary Beth Poston (803) 625-4256 marybeth@wisebatten.com

Notes:

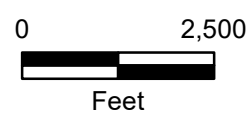
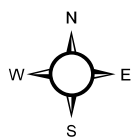
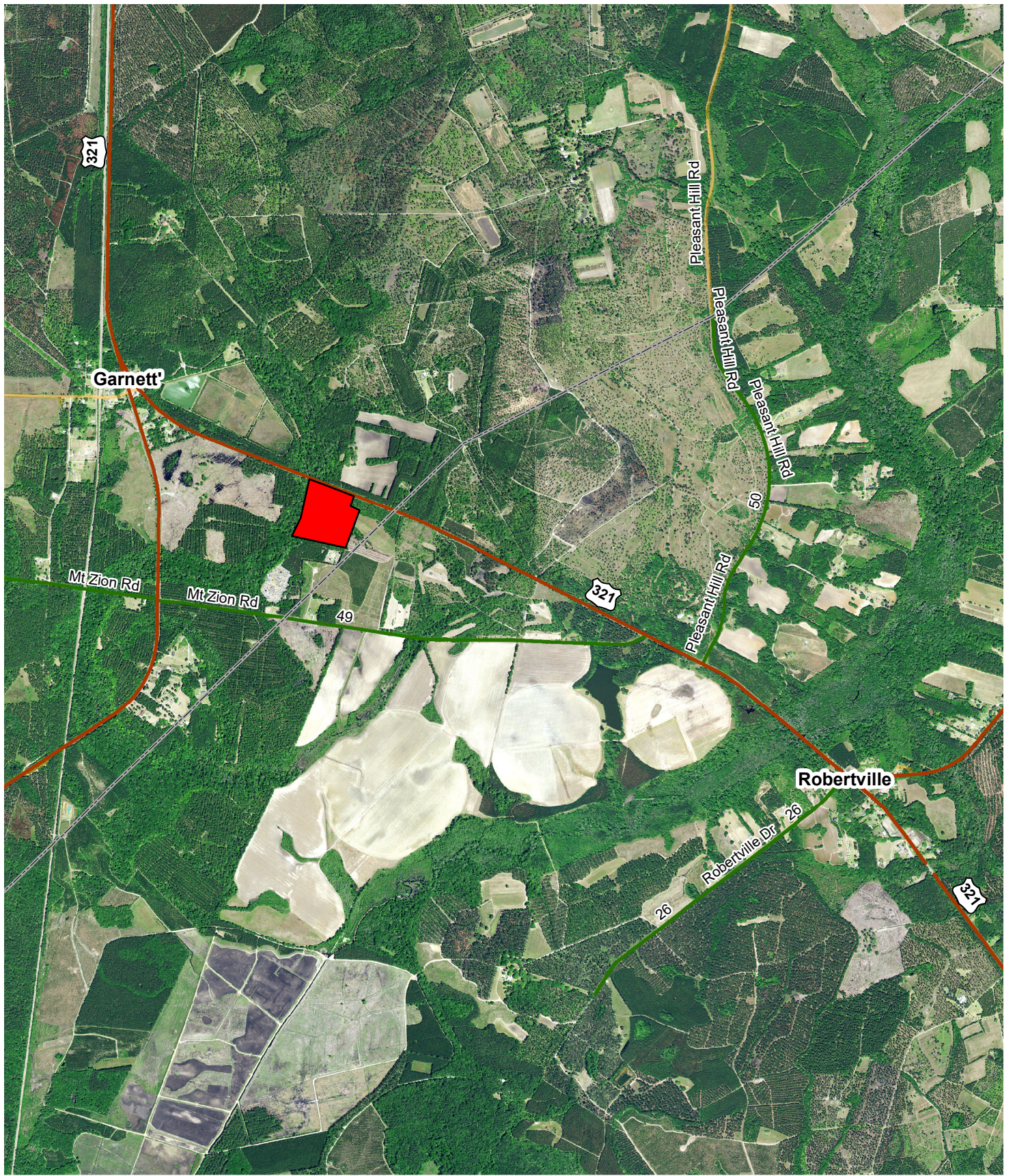
1. This offering is subject to change or withdrawal without notice.
2. We welcome the participation of other brokers.

Garnett Tract Property Highlights

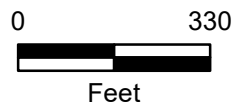
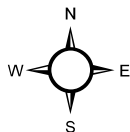
- 24.4 (+/-) acres near Garnett in Hampton County, South Carolina, just north of the Jasper County line
- Complete tree cover with the exception of one small field
- Much of the property will perk
- Electrical service available from highway frontage
- Well and septic required for homesite(s)
- Adjacent lands to the east are protected by a Conservation Easement
- Neighbor to the north and across US Hwy 321 is an 800-acre quail hunting plantation protected by a Conservation Easement
- Neighbor to the south is an automotive junk yard
- 10 minutes south of Estill, SC
- 50 minutes to Bluffton, SC and Savannah, GA



Location Map
Garnett Tract
24.4 +/- GIS Acres
Hampton County, SC
Date: 7/27/2022



Location Map
Garnett Tract
24.4 +/- GIS Acres
Hampton County, SC
Date: 7/27/2022
2021 Aerial Photography



2021 Aerial Photography
Garnett Tract
24.4 +/- GIS Acres
Hampton County, SC
Date: 7/27/2022