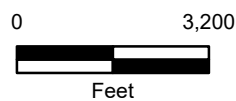
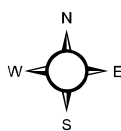
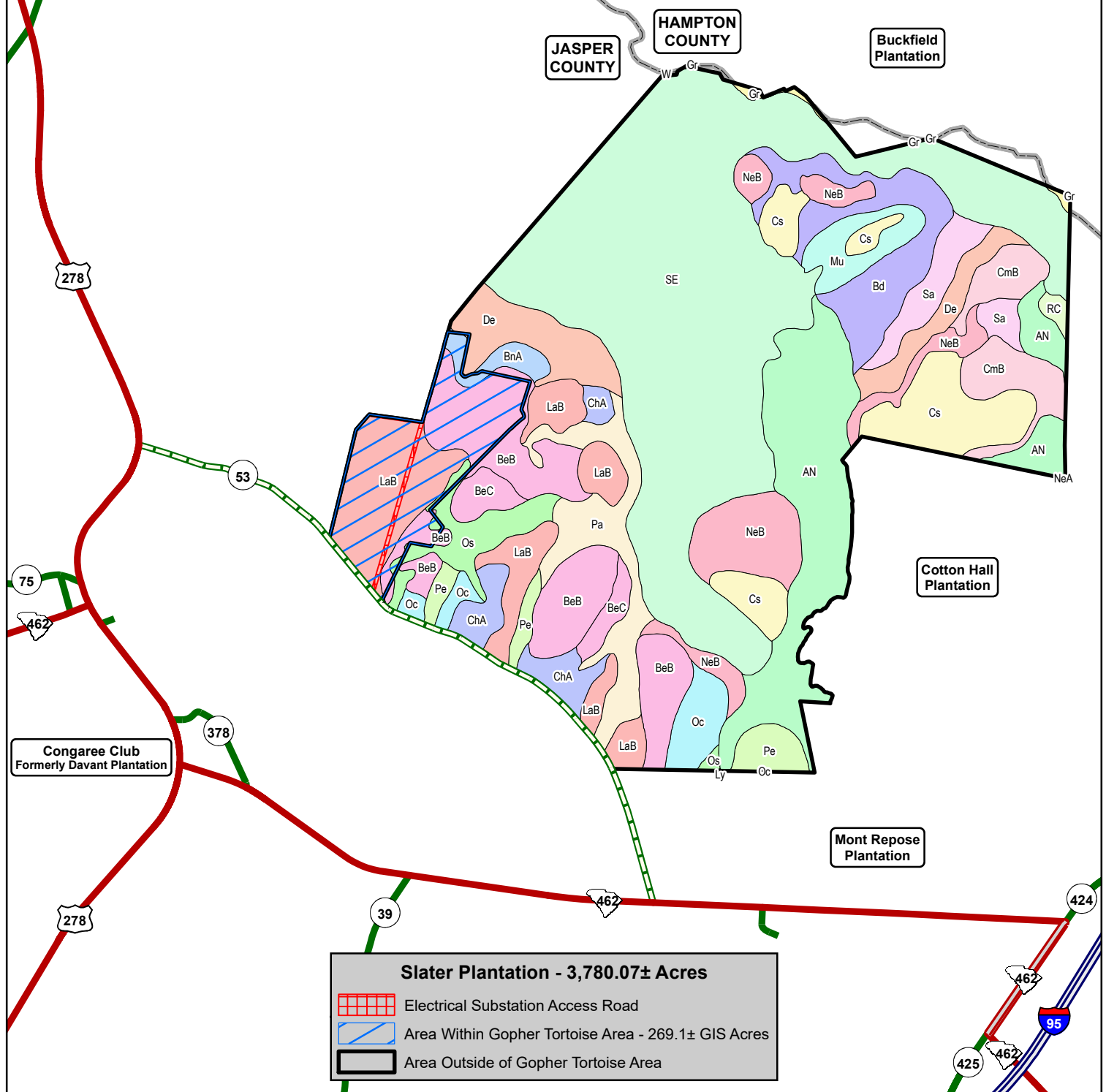


Soil

Argent Association - AN - 383.82± Acres	Deloss Fine Sandy Loam - De - 157.62± Acres	Osier Loamy Sand - Os - 81.26± Acres
Bladen Fine Sandy Loam - Bd - 167.63± Acres	Grifton-osier Complex - Gr - 8.95± Acres	Paxville Fine Sandy Loam - Pa - 146.39± Acres
Blanton Fine Sand - BeB & BeC - 368.38± Acres	Lakeland Fine Sand - LaB - 296.29± Acres	Pelham Loamy Sand - Pe - 63.45± Acres
Bonneau Loamy Sand - BnA - 30.87± Acres	Lynn Haven Fine Sand - Ly - 0.05± Acres	Rains-lynchburg Association - RC - 9.43± Acres
ChIPLEY Fine Sand - ChA - 80.16± Acres	Murad Fine Sand - Mu - 58.83± Acres	Santee Association - SE - 1,245.54± Acres
Chisolm Loamy Fine Sand - CmB - 112.49± Acres	Nemours Fine Sandy Loam - NeA & NeB - 188.85± Acres	Santee Fine Sandy Loam - Sa - 76.91± Acres
Coosaw Loamy Fine Sand - Cs - 201.65± Acres	Ocilla Loamy Fine Sand - Oc - 71.21± Acres	Water - W - 0.02± Acres



Soil Type Map
 Slater Plantation
 3,780.07± Acres
 Jasper County, SC
 April 08, 2021